



**GEO-
INSTITUTE**
**Delaware Valley
Chapter**

DELAWARE VALLEY GEO-INSTITUTE

DVGI September 2017

Volume 17, Issue 6

September 2017 DVGI Dinner Meeting

Inside this issue:

September 2017 Dinner Meeting.....1
May 2017 Dinner Meeting.....2
Announcements3-5
Events and Conferences.....6-7
Sponsors and Universities.....8-11

SPEAKER: Benjamin S. Rivers, P.E., Federal Highway Administration
TOPIC: Accelerating Reliable Geotechnical Solutions in Project Delivery
DATE: Tuesday, September 19th, 2017
LOCATION: Valley Forge Casino Resort Hotel, Parkview Ballroom
1160 First Avenue, King of Prussia, PA 19406
TIME: 5:30 PM Social Hour, 6:30 PM Dinner and
7:15 PM Presentation

2017-18 Board of Directors

Chair

Archie Filshill, Ph.D.

Past Chair

James A. McKelvey III, P.E.

Vice-Chair

Russ Preuss, P.E.

Treasurer

James M. Beideman, P.E.

Secretary

Eric Backlund, P.E.

Newsletter Director

Theresa Loux, Ph.D., P.E.

Web Advisor

Robert Crawford, P.E.

Academic Liaison

Joseph Coe, Ph.D.

ASCE Liaison

Robert M. Sabanas, P.E.

At-Large Directors

Jerry (Tse-Wei) Chen
Jeremy Brown, P.E.

Board Advisors

William K. Petersen, P.E.
Craig Calabria, Ph.D., P.E.

Registration and Payment Online at www.dvgi.org

System performance of our nation's highways relies on the adequacy of infrastructure condition, safety and operational mobility. Part of the larger strategy to minimize system disruptions is integrating reliable technologies and methods to reduce highway improvement project delivery times. Within geotechnical practices, opportunities to shave off time during project delivery exist from the early stages of planning to the late stage of construction. Reliable performance of highway infrastructure also depends on being able to reliably characterize geotechnical conditions that influence the design, construction and long-term performance of our highway infrastructure.

This presentation will introduce tools and technologies that have great potential to reduce project delivery time, while providing reliable geotechnical solutions. GeotechTools.org is a web-based application that allows vetted alternative geotechnical solutions to be compared and perused, in consultation with the geotechnical engineer, during the early stages project development. DIGGS is a geotechnical data exchange standard that has the potential to revolutionize workflow and project delivery schedules. In addition, a number of rapid, reliable and mature geotechnical site characterization technologies are available, but are simply underutilized. Examples of these include CPT, MWD, certain geophysical methods, and geotechnical data management systems. The benefits and limitations of these geotechnical tools and technologies will be discussed. Interested individuals are encouraged to register with and explore www.geotechtools.org before the meeting; registration is free.

ABOUT THE SPEAKER:

Mr. Rivers has more than 20 years of experience in consulting and with the FHWA. He is currently focused in FHWA program areas related to subsurface investigations, earthwork, post-grouted drilled shafts, and geohazards, and on providing technical assistance to DOTs and FHWA Division offices on all geotechnical engineering aspects within transportation. He currently serves as a Geotechnical Engineer with the Federal Highway Administration Resource Center based out of Atlanta. Mr. Rivers is a graduate of North Carolina State University where he received his Bachelors in Civil Engineering in 1994 and his Masters in Geotechnical Engineering in 1996.

*One Professional Development Hour (PDH)
will be provided for this dinner meeting.*



**GEO-
INSTITUTE**
**Delaware Valley
Chapter**

May 2017 Dinner Meeting

FHWA's Accelerated Bridge Construction (ABC) Program Benjamin Beerman, P.E., Federal Highway Administration

Approximately one-fourth of the Nation's 600,000 bridges require rehabilitation, repair, or total replacement. However, the work that occurs from on-site construction activities can have significant social impacts to mobility and safety. In many cases, the direct and indirect costs of traffic detours that result from the loss of a bridge during construction can exceed the actual cost of the structure itself. For example, full-lane closures in large urban centers, or on highways with heavy traffic volumes, can have a significant economic impact on commercial and industrial activities in the region. Partial lane closures and other bridge activities that occur alongside adjacent traffic can also lead to safety issues. Because of the potential economic and safety impacts, minimizing traffic disruptions is a goal that should be elevated to a higher priority when planning bridge related construction projects. ABC is bridge construction that uses innovative planning, design, materials, and construction methods in a safe and cost-effective manner to reduce the onsite construction time that occurs when building new bridges or replacing and rehabilitating existing bridges.



(Image courtesy of presenter).

ABOUT THE SPEAKER:

Mr. Beerman brings over 20 years of experience related to program delivery and oversight, design, repair/rehabilitation, management, inspection and construction for both highway and rail structures located throughout the United States. He currently serves as a Senior Structural Engineer with the Federal Highway Administration Resource Center based out of Atlanta, GA and is the national deployment coordinator for Accelerated Bridge Construction for the agency. Mr. Beerman chairs the TRB Joint Subcommittee for Accelerated Bridge Construction (AFF00-2), serves as the FHWA's liaison for the AASHTO SCOBS subcommittee on bridge construction (T4), is an Executive Panel member for the U.S. Department of Transportation's University Transportation Center for Accelerated Bridge Construction, and co-chairs the Georgia/Carolina's regional PCI committee. Prior to joining the Federal Highway Administration Mr. Beerman has held government positions with the Louisiana and West Virginia Departments of Transportation; in addition to private sector positions with Modjeski and Master's and HDR, Inc. Mr. Beerman is the recipient the FHWA's Team Leadership award, the FHWA Bridge Leadership Council's National Leadership award, and the FHWA Associate Administrator's Corporate award.



(Image courtesy of presenter).

Mr. Beerman's full presentation is available at <http://dvgi.org/Newsletters.html>



ANNOUNCEMENTS

Upcoming Dates for 2017-2018 Dinner Meetings and events are as follows:

- ◆ **September 19th Dinner Meeting:** Benjamin S. Rivers, P.E.
“Accelerating Reliable Geotechnical Solutions in Project Delivery”
- ◆ **October 17th Dinner Meeting:** Speaker TBD
- ◆ **November 14th Dinner Meeting:** Robert J. Palermo, P.E.
“Foundation Design and Construction of the New Tappan Zee Bridge”

One PDH will be awarded for most dinner meetings that you attend.

If you are interested in presenting at one our monthly meetings or have ideas about potential speakers, please get in touch with a DVGI board member.

2017-18 Board of Directors Contact Information

Chair

Archie Filshill, Ph.D.
(archie@aeroaggregates.com)

Secretary

Eric Backlund, P.E.
(ebacklund@kleinfelder.com)

At-Large Directors

Jerry (Tse-Wei) Chen
(chenj2@pbworld.com)

Past Chair

James A. McKelvey III, P.E.
(jaym@earthengineering.com)

Newsletter Director

Theresa Loux, Ph.D., P.E.
(tloux@aeroaggregates.com)

Jeremy Brown, P.E.

(jbrown@schnabel-eng.com)

Vice-Chair

Russ Preuss, P.E.
(rpreuss@gfnet.com)

Web Advisor

Robert Crawford, P.E.
(bobc@jjaconstruction.com)

Board Advisors

William K. Petersen, P.E.
(wpetersen@schnabel-eng.com)

Treasurer

James M. Beideman, P.E.
(jbeideman@kleinfelder.com)

Academic Liaison

Joseph Coe, Ph.D.
(joseph.coe@temple.edu)

Craig Calabria, Ph.D., P.E.
(crcalabria@msn.com)

ASCE Liaison

Robert M. Sabanas, P.E.
(rsabanas@gmail.com)



**GEO-
INSTITUTE**
Delaware Valley
Chapter

ANNOUNCEMENTS



Geosynthetic Institute

GSI Webinars for 2017—(1.5 PDH/each)

From 11:30 AM—1:00 PM (Eastern Time)

Topics, Dates and Registration at www.geosynthetic-institute.org/webinar.htm

Cost: GSI Members \$200; Nonmembers \$250

Date	GSI No.	Title
October 11	W-1	MSE Wall Failure Data Base (300 cases)
October 25	W-2	MSE Wall Back Drainage Design
November 8	W-3	MSE Wall Remediation and Monitoring
December 13	W-4	MSE Wall Field Construction Inspection Practices

HAVE DVGI PUBLISH YOUR ARTICLE, ADVERTISEMENT, OR JOB POSTING

- Do you have an interesting article on a project or individual in your organization that you would like to have published in the DVGI newsletter?
- Would you like to get the word out about a job opening, new venture, etc. to our membership via the newsletter?

Please submit your articles or news items for consideration in the next edition of the newsletter or get in touch about our reasonably-priced advertising by contacting Theresa Loux (tloux@aeroaggregates.com).

DVGI Merchandise Available for Purchase

Coffee mugs (\$8) and lapel pins with the DVGI logo (\$5) are available for purchase. See Russ Preuss if you are interested in purchasing either of these items.

**ASCE/G-I Members:
Read past and present issues of Geo-Strata magazine online at www.asce.org**



**GEO-
INSTITUTE**
**Delaware Valley
Chapter**

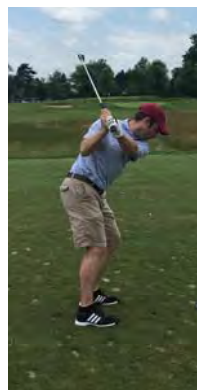
EVENTS AND CONFERENCES

4th Annual DVGI Golf Outing

On June 23rd, 40 DVGI members and friends participated in the 4th Annual DVGI Golf Outing at Jeffersonville Golf Club. The weather was perfect and the refreshments were cold as the first team teed off at 12:30 that day. The Schnabel Engineering/Urban Engineers/Kimball team took home the best team score prize, while the Maser/Maccafferri team had the dubious honor of the worst or “most honest” team score. Mike Kwiatkowski of Maser and Steve Welsh of Gannett Fleming won the longest drive awards while Jason Estock of McCrossin Foundations won the closest to the pin prize. After the round of golf, participants gathered for dinner and drinks. It was a great event to get to socialize with DVGI members and friends at a more informal gathering.



Special thanks to our 21 corporate sponsors which made the event a great success, providing over \$3,300 for the DVGI Scholarship fund, our largest total to date. Looking forward to next year’s outing!



(All images courtesy of R. Preuss)



**GEO-
INSTITUTE**
**Delaware Valley
Chapter**

EVENTS AND CONFERENCES

Changes in Environmental Analysis for Waterways Permitting (1 PDH)



A brief introduction to the recently-finalized Pennsylvania Function-Based Aquatic Resource Compensation Protocol and its application for waterways and wetlands permitting under DEP's Chapter 105. This will be of interest to civil engineers, planners and others involved in land development.

Date/Time: Thursday, September 21, 2017
from 5:30 - 8:00 pm

Location: Pepper's; 239 Town Center Rd,
King of Prussia, PA

Fees: Members \$30
Government Employees & Students \$25

RSVP by Monday September 18, 2017 via online reservations. <http://sections.asce.org/philadelphia/events>

Emergency Repair of the PA/NJ Turnpike Connector Bridge (1 PDH)



In January 2017, a fracture in the top tension chord of a four-span continuous deck truss was discovered, forcing the immediate closure of the bridge connecting the PA and NJ Turnpike's over the Delaware River at Bristol, PA. Learn how the jacking, restoration, and nondestructive testing operations allowed for the bridge to be reopened less than seven weeks after the date of fracture.

Date/Time: Tuesday, September 26, 2017 at 5:30pm

Location: Parkview Ballroom, Valley Forge Casino Resort, King of Prussia, PA

Fees: Members \$45, Non-members \$50
Government Employees \$25, Students \$15

RSVP by September 21, 2017 at 5:00 pm
<http://www.sei-philly.org/>

NYC East Side Access and 2nd Avenue Subway Mega Projects (1 PDH)



Urban Engineers will present "New York City Mega-Projects - East Side Access and Second Avenue Subway: Construction Challenges and Solutions." The program will highlight some of the uncommon approaches used to solve a number of the more difficult heavy civil construction challenges related to tunnel mining.

Speakers: Edwin Williamson, PE (Urban Engineers)
Bill Thomsen, PE (Urban Engineers)

Date/Time: Thursday, October 5, 2017
5:30 - 8:30 pm

Location: Maggiano's Philadelphia
1201 Filbert Street
Philadelphia, PA 19107

Fees: Members \$40
Government Employees & Students \$20
\$50 after RSVP Deadline

RSVP by noon on Monday October 2nd. RSVP via online reservations. <http://sections.asce.org/philadelphia/events>

SAVE THE DATE: ASCE Philly Fall Dinner Meeting

Date/Time: Thursday, November 9, 2017

Location: Maggiano's Little Italy
1201 Filbert Street
Philadelphia, PA 19107



**GEO-
INSTITUTE**
**Delaware Valley
Chapter**

EVENTS AND CONFERENCES

Villanova Presents: 2017 PA Stormwater Management Symposium

October 11-12, 2017

Hosted by Villanova University, this symposium will include topics related to resilient stormwater systems. The purpose is to advance the knowledge, and understanding of sustainable stormwater management for those dealing in all aspects of planning, design, construction, maintenance and operations, and regulatory compliance. There will be a workshop for municipal officials preceding the symposium on October 10th.

Please visit the VUSP website for more information:

<http://www1.villanova.edu/villanova/engineering/research/centers/vcase/vusp1/symposium2017/symposium2017.html>



IFCEE 2018

March 5-10, 2018 | Orlando, Florida USA



GEESDV 2018

Austin, Texas USA | June 10-13, 2018

5th Geotechnical Earthquake Engineering and Soil Dynamics



Calling All Volunteers! It's PA Infrastructure Report Card Time Again!

ASCE in Pennsylvania needs your help to research, analyze, write and promote the 2018 Report Card for Pennsylvania's Infrastructure. The report card is one of ASCE's greatest tools to convey to elected officials and the public the status of Pennsylvania's infrastructure. The committee is looking for people in each of the following categories to help evaluate the state's conditions: Dams, Drinking Water, Hazardous Waste, Levees, Solid Waste, Waste Water, Aviation, Bridges, Inland Waterways, Ports, Rail, Roads, Transit, Parks and Recreation, Schools and Energy.

We're also looking for people publicize the report card once its released. Volunteers can anticipate a 4-8 hour/month commitment over a six month period with most of the work occurring on your schedule. New volunteers, students and younger members are welcomed!

If interested in helping with the Report Card in some fashion, please fill out the following survey, which will help track our volunteer pool. <https://www.surveymonkey.com/r/VHRYNCY>

Please reach out to Jason Bowes at jbowes@gpinet.com or 570-703-0458 for more information or with any questions.



EARTH ENGINEERING INCORPORATED
Geotechnical Engineers & Geologists

SEGMENTAL RETAINING WALL DESIGN
LABORATORY ANALYSIS OF SOILS
CONSTRUCTION MONITORING

Corporate Headquarters
115 W Germantown Pike, Suite 200
East Norriton, PA 19401
(610) 277-0880 fax (610) 277-0878

Full-Service Locations
West Berlin, NJ (856) 768-1001
Mechanicsburg, PA (717) 697-5701
Emmaus, PA (610) 967-4540

*Service you can trust
Quality you can count on*

www.earthengineering.com



Compaction Grouting Services, Inc
Quality Geotechnical Contracting Solutions Since 1998

375 Parkmount Road, Media, PA 19063
mail: PO Box 55, Wallingford, PA 19086
888.440.6606 • 610.558.0977 fax • cgs@cgsinc.net
www.cgsinc.net

DIGIOIA GRAY & ASSOCIATES

Bill Rinker, PE

Service Line Manager - Construction Management, Program Management, and Strategy

871 North Hanover St. Suite 4 Pottstown, PA 19464
Mobile: 610-637-7817
www.digioiagray.com

brinker@digioiagray.com



**Ultra-Lightweight Aggregate
Made from 100% Post-Consumer Glass**

www.aeroaggregates.com



INNOVATIVE GEOSYNTHETIC SOLUTIONS AND APPLICATIONS

High Strength Reinforcement	Sediment Capping
Drainage	Remediation
Lightweight Fill	Geosynthetic Lining Systems
Recycled Materials	Sustainable Solutions



Archie Filshill, Ph.D. archie@inova-geo.com +1 215-416-7373

HAYWARD BAKER
Geotechnical Construction

Todd Culp
Philadelphia Office
484-428-2519
www.HaywardBaker.com

**AGGREGATE PIERS
MICROPILES
SOIL NAILS AND TIE-BACKS
JET AND COMPACTION GROUTING
SOIL MIXING**

COMPLETE GROUND MODIFICATION SOLUTIONS AND SERVICES

SPECIALTY FOUNDATION CONTRACTOR



Providing innovative, geosynthetic solutions for the construction industry.

- Perimeter & Sediment Control
- Erosion Control
- Geosynthetics
- Inlet Protection
- Stormwater Management

Over 30 sales and technical representatives available to serve you.

Leading the Way

ACF has a wide range of solutions from the best suppliers and a network of warehouses to deliver them. ACF offers technical and job site support, and custom products. There's work to do. Let's get it done.

Fred Waite, Regional Mgr • 610.842.0868 • acfenv.com

**PARTNERING WITH ENGINEERS FOR
GEOTECHNICAL SUCCESS**



EARTHCORE
services

HARRISBURG • READING • PRINCETON

610 326 4826 earthcoreservices.com

- Compaction Grouting
- Deep Dynamic Compaction
- Foundation/Caisson Drilling
- Shoring
- Soil Nailing
- Micropiiles
- Test Borings



Gannett Fleming
100 Years
of Excellence Delivered As Promised

**Geotechnical Engineering • Environmental Services
Transportation Planning • Highways • Bridges
ITS & Traffic Engineering • Transit & Rail
Water/Wastewater • Stormwater Management
Geographic Information Systems**

Ara G. Mouradian, PE
Valley Forge Office • 610.650.8101
www.gannettfleming.com

ISO 9001:2008 CERTIFIED



Golder Associates
www.golder.com

Ground Engineering and Environmental Services
Offices across the Delaware Valley

Bristol, Pennsylvania (215) 826-1560
Mt. Laurel, New Jersey (856) 793-2005
Newark, New Jersey (973) 645-1922

Engineering Earth's Development. Preserving Earth's Integrity.



GeoStructures, Inc.
Engineered Earth Structures & Foundations

Shana Carroll, P.E., LEED AP 
Midatlantic Regional Manager

10130 Old Frederick Road
Ellicott City, MD 21042
410.458.0289 • fax 443.267.0110
scarroll@geostructures.com
www.geostructures.com



GZA

Foundations | Support of Excavation
Slope Stability | Instrumentation
Dams & Levees | Marine/Waterfront
Contractor Support | Environmental Assessment
Remedial Design | Natural Resources
Regulatory Compliance

For more information contact:
Ernest Hanna, P.E., 267-464-3612
ernest.hanna@gza.com
www.gza.com

Proactive by Design



HILLIS-CARNES
ENGINEERING ASSOCIATES

(484) 434-1000 | www.hcea.com



MORETRENCH

No one has seen more.™

- Groundwater Control
- Earth Retention
- Deep Foundations
- Grouting
- Ground Freezing

moretrench.com




GeoStructures, Inc.

Geotechnical Engineering & Construction Material Testing

- drilling and CPT services
- laboratory testing
- petrographic examination
- foundation/retaining wall design
- real-time geotechnical instrumentation
- environmental assessments

King of Prussia, PA 610.265.1818 www.geostructures.net

Quality Assessment of Piles and Shafts
by the Foundation Testing Experts



GRL engineers, inc.

- Pile Driving Monitoring (PDA, on location or w/ SiteLink™)
- Dynamic Load Testing (any foundation type, w/ APPLE)
- GRLWEAP Analysis (Wave Equation)
- Foundation Integrity Testing (CSL, PIT and Thermal Profiling)
- SPT Hammer Calibration

Serving the Delaware Valley from...
Pennsylvania..... 610.459.0278
Central Office..... 216.831.6131

www.GRLengineers.com GRL-PA@GRLengineers.com



180 Sheree Blvd., Suite 3800
Exton, PA
19341

o | +1 610.594.1444
ext. 109
m | +1 610.656.4419
f | +1 610.594.2743

James M. Beideman, PE
Project Manager I

jbeideman@kleinfelder.com

kleinfelder.com



16000 Commerce Parkway
Mount Laurel, NJ 08054
856.273.1224
www.trcsolutions.com

Contact: Melissa Logan Gillespie, PE

- GEOTECHNICAL ENGINEERING
- TEST BORINGS
- MATERIAL TESTING
- PILE DYNAMIC ANALYSIS & DRIVEABILITY STUDIES
- EXPERT WITNESS TESTIMONY
- VIBRATION MONITORING
- GEOTECHNICAL INSTRUMENTATION
- CONSTRUCTION PHASE INSPECTION & TESTING



*Design of Excavation Support, Ground Anchors,
Underpinning, Cofferdams, Micropiles...*

1220 Valley Forge Road, Suite 14, Phoenixville, PA 19460
Phone: (610) 933-8353 • Fax: (610) 933-8359
www.PeirceEngineering.com • Mail@PeirceEngineering.com

- Geotechnical and Geostuctural Engineering
- Dam, Tunnel, and Underground Engineering
- Environmental Services and Sustainable Geotechnics
- Geoscience and Geophysics Services
- Construction and Owner Services



schnabel-eng.com
West Chester, PA T 610-696-6066

Subsurface Utility Engineering



master locators

▶ masterlocators.com ▶ 800 495 4248




QUANTUMGEOPHYSICS

*Geophysical Consultant to the
Engineering, Environmental, and
Groundwater Industries*

Richard Lee, P.G., R., G.P.
Phone: (610) 917-9100
rich@quantumgeophysics.com



D
V
G
I

C
O
R
P
O
R
A
T
E

S
P
O
N
S
O
R
S



College of Engineering

TEMPLE UNIVERSITY

Joseph Thomas Coe, Ph.D.
Assistant Professor

Civil & Environmental Engineering
1947 N. 12th Street
Philadelphia, PA 19122-6018
t 215-204-6100 f 215-204-4696
e-mail joseph.coe@temple.edu
www.temple.edu/engineering/cee



VILLANOVA UNIVERSITY

Study part- or full-time.

www.vuengineering.com



Combine geotechnical courses with environmental, structural, transportation, or water resources courses or create your own interdisciplinary program.



WHERE THEORY MEETS PRACTICE.

Learn more about Penn's **Master of Science in Applied Geosciences.**

WWW.UPENN.EDU/MSAG



LEHIGH UNIVERSITY

Muhannad T. Suleiman, Ph.D.
Associate Professor

Department of Civil and Environmental Engineering
STEPS Building
1 West Packer Avenue
Bethlehem, PA 18015-3001
(610) 758-2592 Fax (610) 758-6405
e-mail: mts210@lehigh.edu
<http://www.lehigh.edu/~incee>



Department of Civil & Environmental Engineering
Rowan Hall
201 Mullica Hill Road
Glassboro, NJ 08028

Beena Sukumaran, PhD
*Chairperson
Professor*

856-256-5324
856-256-5242 fax
sukumaran@rowan.edu

LAFAYETTE COLLEGE

Department of Civil and Environmental Engineering

Acopian Engineering Center
740 High Street • Room 319 • Easton, Pennsylvania 18042
TEL 610-330-5437 • FAX 610-330-5059



Joseph P. Martin, Ph.D., P.E.
Professor

Department of Civil, Architectural and Environmental Engineering
3141 Chestnut Street
Philadelphia, PA 19104

TEL 215.895.2363
610.446.6477
FAX 215.895.1363
E-MAIL martinjp@drexel.edu
www.drexel.edu/coe/cae

University of Delaware Widener University